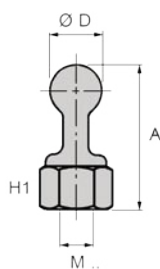
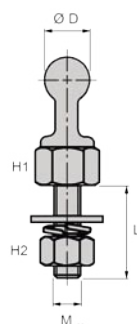


Spherical access points
Points fixes
Aardingsbollen



Spherical access points with thread
Points fixes sphériques avec taraudage.
Aardingsbollen met busdraad.

Art.	Ø (mm)	Length (mm)	Thread M ...	H1 (mm)	H2 (mm)	ICC (kA/1s)
EMT 2662	20	59	M12	24		20
EMT 2762	25	78	M12	27		30
EMT 2763	25	78	M16	27		30



Spherical access points with threaded stud
Points fixes sphériques avec tige filetée
Aardingsbollen met draadstang.

Art.	Ø (mm)	Length (mm)	Thread M ...	H1 (mm)	H2 (mm)	ICC (kA/1s)
Straight - Droits - Recht						
EMT 29511	18	25	M10x25	19	17	10
EMT 29512	18	35	M10x35	19	17	10
EMT 29513	18	45	M10x45	19	17	10
EMT 2664	20	35	M12x55	24	19	20
EMT 2665	20	45	M12x65	24	19	20
EMT 2765	25	45	M12x65	27	19	30
EMT 2766	25	45	M16x70	27	24	30
Twisted - Coudés - Gebogen						
EMT 29521	18	25	M10x25	19	17	10
EMT 29522	18	35	M10x35	19	17	10
EMT 29523	18	45	M10x45	19	17	10



Spherical access points for apparatus
Points fixes sphériques pour appareillage
Aardingsbollen voor toestellen

Art.	Ø (mm)	Length (mm)	Thread M ...	H1 (mm)	H2 (mm)	ICC (kA/1s)
EMT 2956	18		12,5			10



Spherical access points for round conductors
Points fixes sphériques pour conducteurs ronds
Aardingsbollen voor ronde geleiders

Art.	Ø (mm)	Length (mm)	Thread M ...	H1 (mm)	H2 (mm)	ICC (kA/1s)
Straight - Droits - Recht						
EMT 295308	18		6 - 8			10
EMT 295312	18		10 - 12			10
Twisted - Coudés - Gebogen						
EMT 295508	18		6 - 8			10
EMT 295512	18		10 - 12			10

«T» access points with threaded stud
Points fixes en «T» avec tige filetée
Aardingsbollen met draadstang

Art.	Ø (mm)	Length (mm)	Thread M ...	H1 (mm)	H2 (mm)	ICC (kA/1s)
EMT 2195110			M10x35		17	20
EMT 2195112			M12x35		17	20