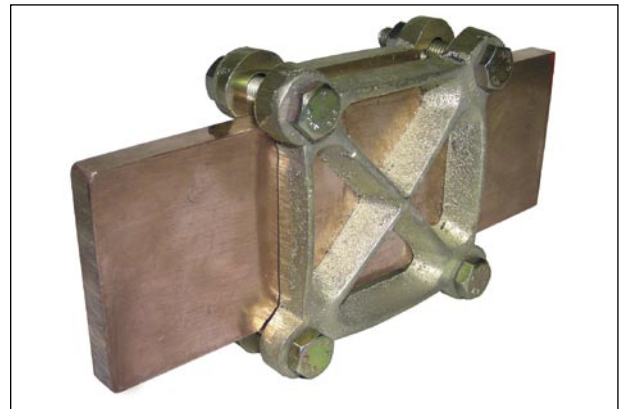
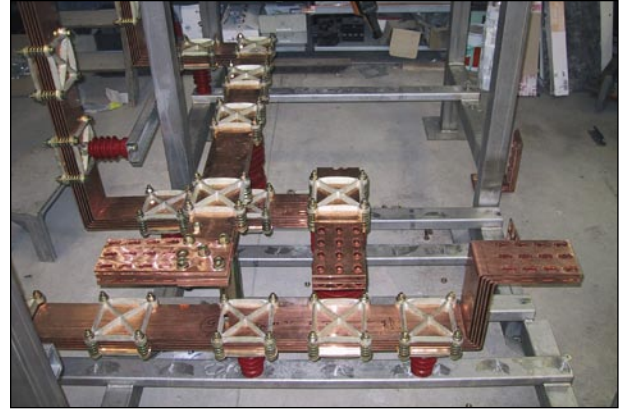
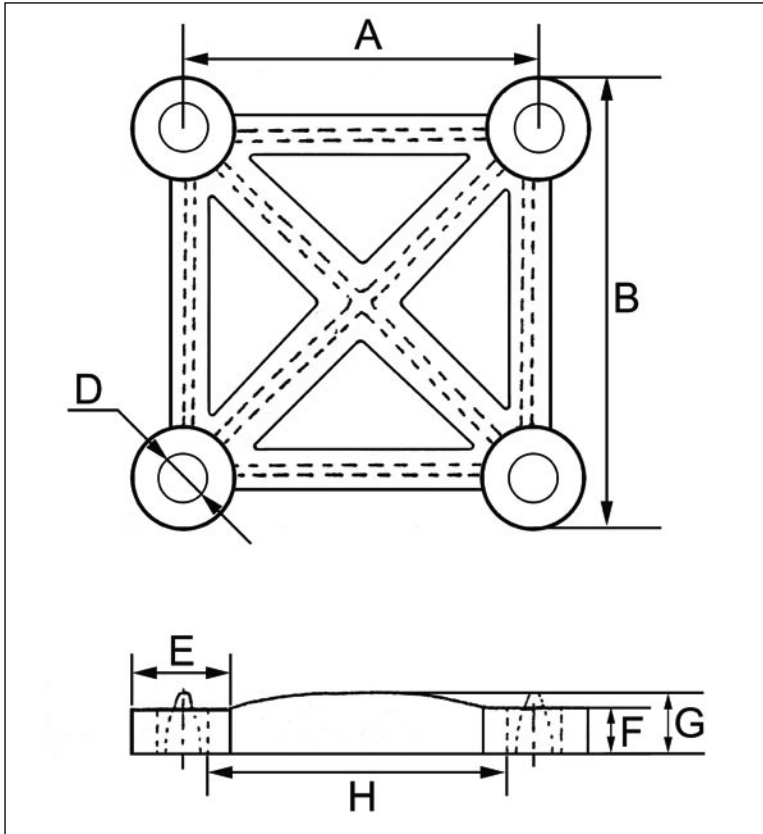


Busbar holders - Bar derivation  
 Supports barres - clame de dérivation.  
 Busbar klemmen - Aftakingsklemplaten.

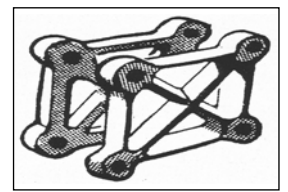
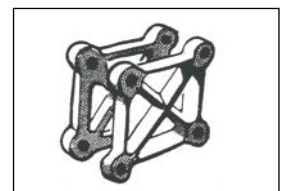
- Clamps made in brass, to fasten bars together without threading.
- Assembly of bars by tightening, easy to use on works.
- On request provided with Stainless steel bolts and washers.

- En laiton permet la connexion entre barres sans perçage.
- Assemblage de barres par serrage, facilité d'emploi sur chantier.
- Sur demande livré avec boulonnerie inox.

- In messing, om staven met elkaar te hechten zonder boren.
- Samenbouw van de staven door aanspanning, gemakkelijk te hanteren.
- Op aanvraag met RVS bouten en ringen.



Art.	Bar width Largeur barre Breedte staaf	A	B	D	E	F	G	H	Kg
SCB 201	20 mm	27	42	7	14	7,5	9	20	0,114
SCB 301	30 mm	37	51	7	15	7	8,5	30	0,146
SCB 401	40 mm	49	67	7	19,5	8,5	9,5	42	0,290
SCB 501	50 mm	58	79	9	19	8	11	50	0,380
SCB 601	60 mm	71	91	9	20	9	11,5	62	0,540
SCB 801	80 mm	91	113	11	25	9	15	80	0,920
SCB 1001	100 mm	115	140	11	25	9	16	100	1,360
SCB 1201	120 mm	138	170	13	33	15	20	124	2,600
SCB 1601	160 mm	174	205	14	30	15	20	160	3,600
SCB 2001	200 mm	224	262	16,5	35	20	26	205	9,200
SCB 50 x 30	50 x 30 mm	60/40	79/58	9	20	8,5	10	50/32	0,340
SCB 60 x 40	60 x 40 mm	71/53	93/73	9	20	10	12	63/44	0,520
SCB 80 x 50	80 x 50 mm	91/61	116/85	11	25	9	15	80/50	0,760
SCB 80 x 60	80 x 60 mm	91/74	114/95	10,5	23	9	13	81/62	0,770
SCB 100 x 40	100 x 40 mm	115/51	135/74	10,5	25	9	14	102/40	0,760
SCB 100 x 50	100 x 50 mm	114/62	135/82	10,5	25	10	15	100/50	0,940
SCB 100 x 60	100 x 60 mm	114/72	135/91	10,5	25	10	15	100/60	1,120
SCB 100 x 80	100 x 80 mm	112/90	137/118	10,5	26	10	17	101/80	1,200



Weight for 2 plates - Poids pour 2 plaques - Gewicht voor 2 platen