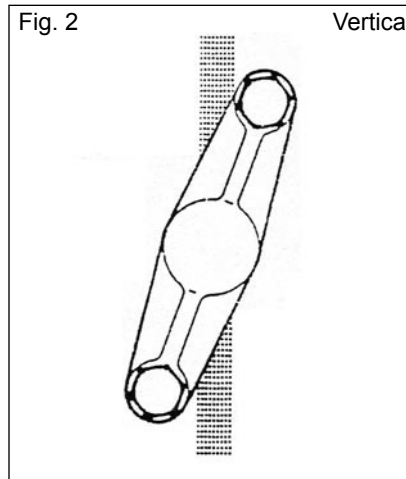
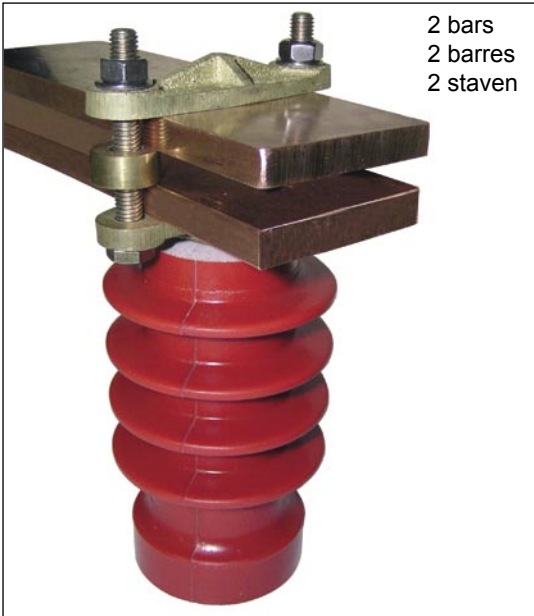
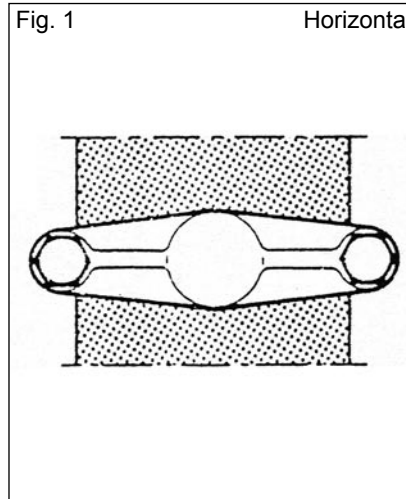
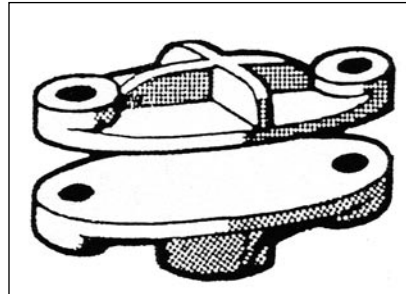
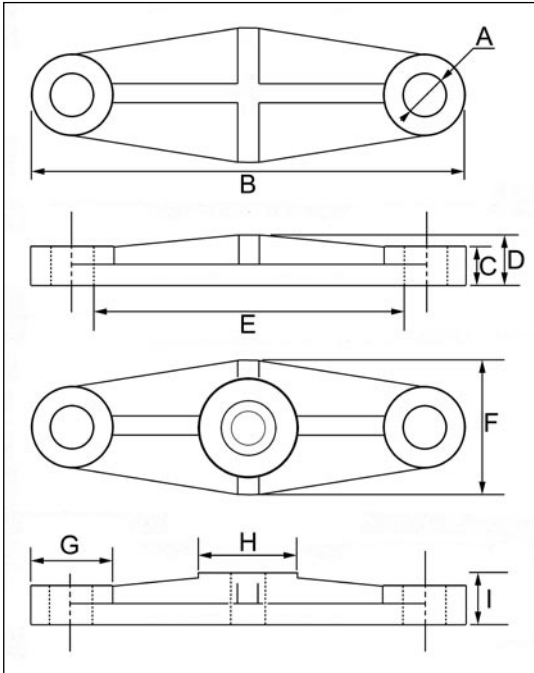


Busbar holders - Horizontal or vertical use
 Supports barres - Horizontal ou vertical
 Busbar klemmen - Horizontaal of vertikaal

- For horizontal use (fig. 1)
- For vertical use (fig. 2)
- Made in brass.
- In fixed version or Sliding version
- Standard threading in M12
- On request delivered with bolts and washers.

- Pour barres horizontales (Fig. 1)
- Pour barres verticales (Fig. 2)
- En laiton.
- En version fixe ou coullisante
- Taraudage standard en M12
- Sur demande livré avec visserie.

- Voor horizontale staven (Fig. 1)
- Voor vertikale staven (Fig. 2)
- In messing vervaardigd
- In vaste of glijdende uitvoering
- Standaard getapt gat in M12
- Op aanvraag geleverd met bouten en ringen.



Art.	Width bar Largeur Breedte	A	B	C	D	E	F	G	H	I	kg
PLB 301	30 mm										
PLB 401	40 mm	7	63	8,5	11,5	41	27	15	19	10	0,125
PLB 501	50 mm	9	83	8,5	13	53	30	20	23	15	0,240
PLB 601	60 mm	9	91	7,5	13	61	22	21	23	14	0,250
PLB 801	80 mm	11	116	10	13	85	35	23	20	14	0,390
PLB 1001	100 mm	11	135	10	15	102	42	24	26	14	0,550