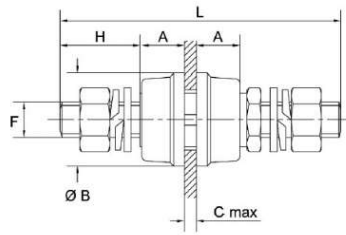


Data Sheet PI/P M 6



| | |
|--|---|
| Operating Temperature | °C: - 40° + 130° |
| Fire reaction | UL94-V0 File Nr. E205214 |
| | HL2 according to the EN45545-2 |
| Material Insulating Parts | Polyester material reinforced with fiberglass BMC RF 3/20 |
| Material Nr. 1 Central Bolt, Nr. 1 Nut and Nr. 3 washers | Nichel-plated brass |
| Material Nr. 2 Nuts and Nr. 2 toothed washers | Galvanized steel |
| F | M 6 |
| Tightening torque | 5 Nm |
| H | 17 mm |
| L | 65 mm |
| A | 12 mm |
| Ø B | 22 mm |
| C max | 5 mm |
| Ø 1 | 3,5 mm |
| Ø 2 | 12,5 mm |
| In rated range | 50 A |
| Operating voltage | 1000 V |
| Test Voltage | 6 KV |
| Package | 40 pcs |
| Weight of package | 1,60 kgs |